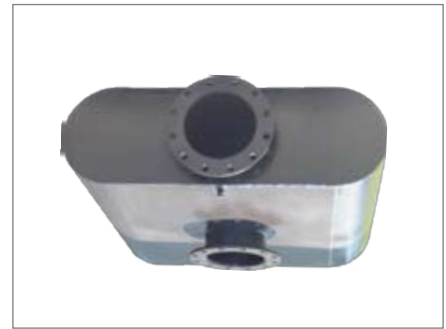


## Downtown Data Center Seattle,WA

### Overview

Seattle is a major communications and technology hub. Nearly limitless information is housed within the walls of downtown Seattle businesses. Protecting that information is vital, which is why backup generators are a must for data centers. While companies in downtown Seattle may be able to store vast amounts of information, their physical space is extremely limited. For one data center, a 2.5 MW Caterpillar 3516C backup generator was a tight fit in its basement. The real challenge surfaced when the unit was required to be fitted with a silencer.



### Challenge

Finding a silencer to fit into the small space while still meeting sound attenuation requirements proved to be a challenge. While designing the silencer, GT had to look for as many opportunities as possible to save space without sacrificing performance. The room (and even access to the room) was so tight the engine would have to be disassembled and reassembled in the basement in order to install a silencer.

### Solution

Faced with a significant obstacle, GT Exhaust and Seattle-based Dehn Engineering—GT's channel partner—were able to engineer and manufacture a 501 Model Silencer to meet the specific requirements. The 501's oval-shaped body allowed the unit to fit into the narrow space, and the sophisticated design maintained optimal performance for effective sound attenuation.

GT furthered its innovative prowess by using a duel inlet flush flange to save additional height. By welding the flange flush against the silencer, GT was able to save approximately 3.5" in height. The silencer was successfully installed and the equipment performed properly and up to required standards, adding another satisfied customer to GT Industries' impressive client roster.

p:+1.888.894.3726  
f:+1.402.323.7270  
gtexhaust.com  
4121 NW 37th St.  
Lincoln, NE 68524  
USA